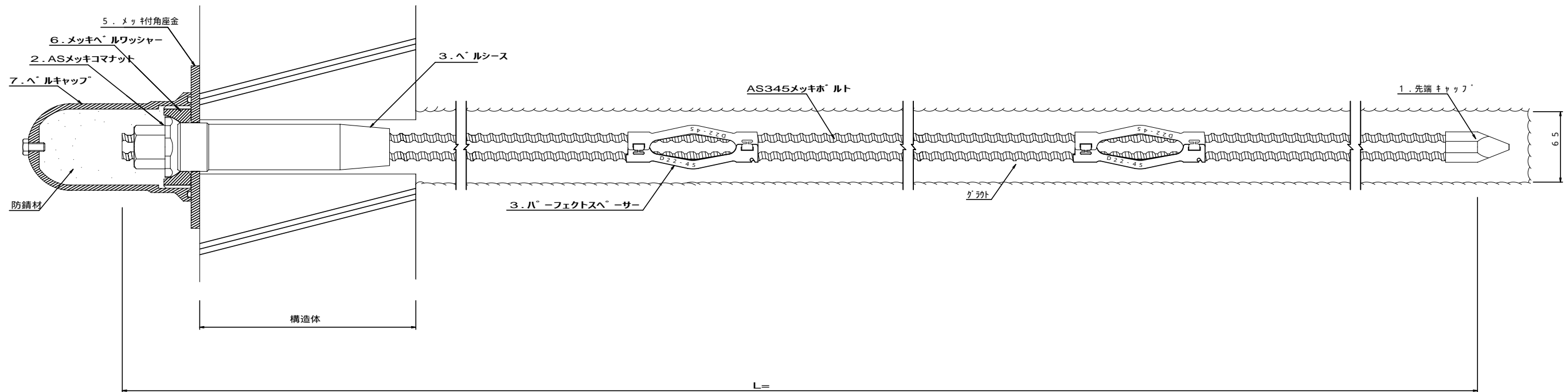
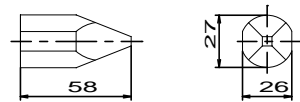


AS345メッキボルト(D22NT)標準施工図(1:2)

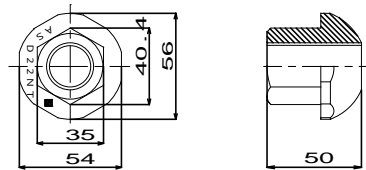


AS345メッキボルト(D22NT)部品図(1:2)

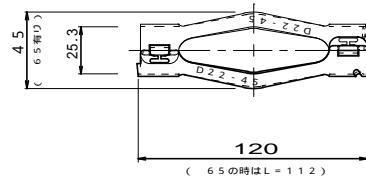
1.先端キャップ



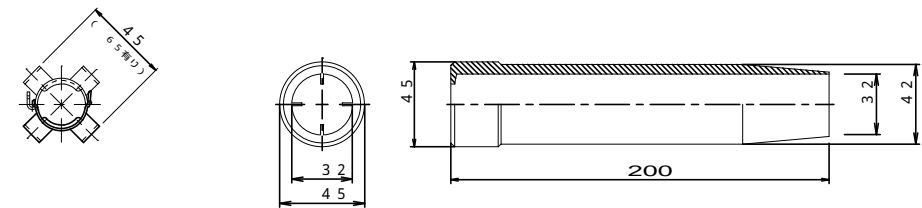
2.ASメッキコマナット(D22NT用)



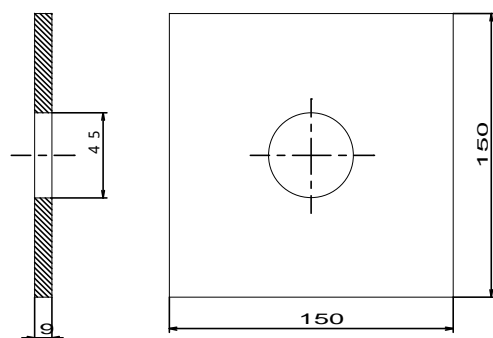
3.パーフェクトスペーサー(D22用)



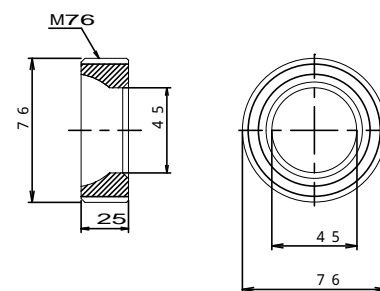
4.ベルシース



5.メッキ付角座金



6.メッキベルワッシャー



7.ベルキャップ

